



**NILE UNIVERSITY
OF NIGERIA**

HONORIS UNITED UNIVERSITIES



MINI PROSPECTUS

For more information

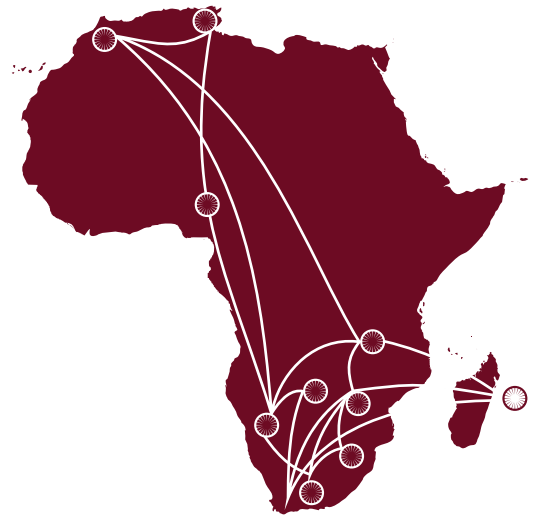
www.nileuniversity.edu.ng

TABLE OF CONTENTS

Honoris United Universities	02
Vice-Chancellor’s Message	03
Why Choose Nile University of Nigeria?	04
Campus Life	05
Nile University Library	06
Guidance & Counseling	06
Staff & Faculty	07
Faculty of Law	08
College of Health Sciences	09
Faculty of Sciences	10
Faculty of Computing Studies	11
Faculty of Engineering	12
Faculty of Environmental Sciences	13
Faculty of Arts & Social Sciences	14
Faculty of Management Sciences	15
School of Preliminary Studies	17
Undergraduate Tuition Fees	21
School of Postgraduate Studies	24
Postgraduate Tuition Fees	25
Scholarship & Discount Terms	28

Nile is now proudly part of the Honoris united Universities Network

Honoris United Universities is the first and largest pan-African private higher education network committed to educating the next generation of African leaders and professionals able to impact regionally in a globalized world. With a footprint that extends from **Casablanca to Cape Town, and From Abuja to Tunis**, the Honoris network now consists of **15 institutions in 10 countries and 32 cities**, amassing significant expertise in contact, distance and online education. Its institutions are well established authorities within the disciplines of **medical and health sciences, engineering, IT, business, law, architecture, creative arts and design, media, and politics. Science and education.** Students also have the opportunity to experience exclusive partnerships and exchange programs at more than **85 universities across Europe and the United States.**



I Key Facts About Honoris

- 15 institutions including multidisciplinary universities, specialized schools, technical and vocational institutes
- 71,000+ students
- 10 countries across Africa
- 32 cities
- 40+ nationalities
- 190+ partnerships with Universities in Europe and the United States
- More than 420 degrees courses available campus-based or online students in the fields of Health Science, Engineering, IT, Business, Law, Architecture, Arts and Design, Media, Education and Political Science
- 2 coding bootcamp in tech hubs

Benefits of Joining the Honoris Network for Nile University

- Exchange program opportunities for students at sister universities under the Honoris umbrella providing them greater access to international opportunities and exposure.
- Increased distance learning capability, enabling us to offer flexible learning for our students, especially working-class postgraduate students.
- Constant collaboration and expertise (best practice) sharing between Nile University and Honoris' partner universities, improving our ability to provide a global education for students.

Vice-Chancellor's Message



Prof. Dilli Dogo - Vice-Chancellor

Selecting a university tailored to your educational needs and requirements is a challenging and very personal choice. Nile University makes that choice easier by offering a broad range of professional courses. We endeavor to maintain a reputation as an international university in Africa, training graduates with internationally accepted professional qualifications who show excellence in their jobs as well as social lives. Our motto, “Build Your Success for a Better Society,” captures the university’s desire to foster an environment that prepares the individual to impact and thrive in our globalized world. “At Nile University, we have taken concrete steps to prepare students for success and global competitiveness through collaborations with reputable organizations across the world.” We would like to be a part of your journey through life, and, as such, we invite you to come and grow with us as a student and later, as an alumnus. Our goal is to help guide your development and prepare you for success in life. As we welcome you to this community, you can depend on the promise that the entire staff and I are committed to working with you to build your success for a better society. Remember, this is your time, so make the very best of it.

Mission Statement

To provide students with opportunities for quality university education that will bring out the best in them and make them stand tall through time, ready to face the challenges of a globalized world.

Vision Statement

Nile University of Nigeria visualizes itself as a vanguard university that gains the respect of the world through academic excellence by providing the highest quality of university education for students from around the globe.

Why Choose Nile University



There are so many reasons to want to gain a university education. However, the end goal is not just about achieving a lucrative career path but also about making an impact in your chosen career. At Nile University, **'Build Your Success For A Better Society'** is not farfetched because we offer the maximum support you require to prepare you for your dream career. Of course, not all jobs require a degree; however, there are several skills employers look out for, which include but are not limited to problem solving, teamwork ability, and independent learning. You will be able to develop these abilities and more throughout your studies.

The best part of studying at Nile University are the various out-of-class learning experiences it provides students with, such as the Student Ambassador program.

As a student ambassador, I educate prospective students on admission procedures and share my personal experiences with them to give them a reason why Nile should be their choice.

The Student Ambassador program has helped me in so many ways. It has boosted my confidence and my interpersonal skills. All in all, the experience has been surreal, and I wouldn't trade it for anything.

Adakole Obulu

B.Sc. Political Science
& International Relations Student

For more:

www.nileuniversity.edu.ng

Value Proposition:

Nile University of Nigeria offers several benefits for students, including:

- Academic excellence based on national and international standards.
- World-class regional and international faculty.
- Tech-enabled platforms and environments for increased learning outcomes.
- Dedicated programs and support for employability, including partnerships with 20+ national and international employers.
- Transversal learning programs that focus on 21st-century skills.
- Future-oriented learning and a rich student experience.
- A pan-African focus on innovation and entrepreneurship.
- Attractive academic and sports scholarships.



Campus Life

Our modern campus located in Abuja gives students the benefit of quality education and social lives via access to advanced facilities and a multicultural student and staff body. The following facilities and programs, all within easy reach, makes student life a rewarding experience

Accommodation

Though limited, our highly sought-after accommodations are available to both male and female students. Our accommodation facilities are modern, clean, comfortable, and equipped with Wi-Fi internet connections. Students are advised to apply early.

Restaurant - Cafeteria

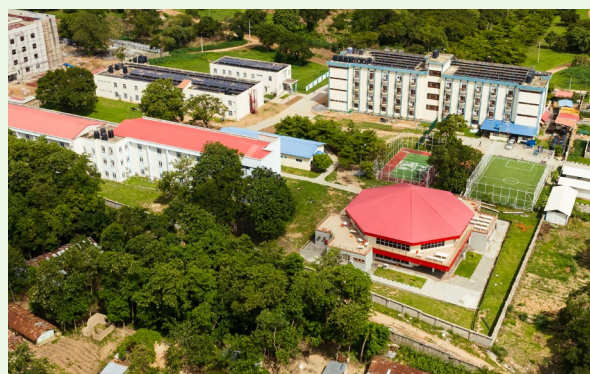
The campus offers various dining options to students, staff, and visitors. NUN has a cafeteria on campus as well as several private food vendors to cater to a variety of food preferences. Operated on a pay-as-you eat basis, the university continually monitors these vendors to ensure a high standard of hygiene and quality.

Transportation Facilities

NUN offers transportation at specified periods with fully air conditioned coaster buses Transportation Facilities

Student Clubs

Joining a student club opens the door to building new friendships, enhancing academic life, collaborating on ideas and projects, and exploring career opportunities. As an active member of a student club, you will learn important leadership and management skills. Clubs currently established are as follows: **Nile Book Club, Nile Business Club, Nile Charity Club, Nile Climate Initiative, Nile Creative Arts Club, Nile Debate Club, Nile Games Club, Nile Google Developer Club, Nile Model United Nations, Nile Photography Club, Nile Startup Campus Toastmasters, Nile Women in Tech and TEDx.**



Nile University Library

The Nile University Library adequately serves the variety of learning needs and styles. Well furnished to promote learning, the library houses a wealth of books, journals, and other learning resources. The library is also equipped with an ICT center, which gives students access to international digital libraries with current e-books and a large range of other multimedia resources. Our automated library system facilitates easy access to resources.



Guidance & Counseling

We take our students' personal, social, educational, and career development seriously and, as such, regard our guidance and counseling services as essential and integral to the overall educational process and experience. The aim is to make available to students academic advice, progress and probation counseling, career planning, and social and personal advice.





■ Staff & Faculty

Comprised of Nigerian and expatriate lecturers with significant local and international experience and accomplishments, our academic staff body is distinguished and uniquely positioned to provide an international educational experience.

As an undergraduate or postgraduate student of Nile University, you will be part of and taught in one of our 8 Faculties: College of Health Sciences, Law, Science, Computing Studies, Engineering, Environmental Sciences, Management Sciences, and Arts & Social Sciences. Each faculty offers programmes that have been approved by the National Universities Commission. In addition, Nile University continues to work on offering new programmes.

Our approach to teaching, learning, and assessment emphasizes practical application of skills and knowledge. This is made possible through our myriad of laboratories, including the Circuit Theory Lab, Electronics Lab, Control Lab, Electrical Machinery Lab, Digital Design Lab, Power Electronics Lab, Communication Lab, Simulation Lab, Computer Lab, Econometrics Lab, Physics Lab, Chemistry Labs, Advanced Research Lab, and Language Lab.

Classes are strategically designed for comfort and ease of impactful interactions between students and lecturers.. Students are encouraged to participate actively in class, and this is ingrained in our teaching methods. Further more, lecturers schedule of office hours and tu torials where students can meet with them and further discuss or ask questions about class topics.

- College of Health Sciences
- Faculty of Law
- Faculty of Engineering
- Faculty of Environmental Sciences
- Faculty of Science
- Faculty of Computing Studies
- Faculty of Management Sciences
- Faculty of Arts & Social Sciences

Faculty of Law



The undergraduate and postgraduate programs of this faculty provide a top-rated university education in the field of law. It provides training in all areas of the law. Law students are provided with world-class facilities and lecturers with several years of experience both in academia and legal practice in Nigeria.

The faculty produces sound graduates worthy of knowledge and character and, thereby, fit and proper for the legal profession. In the faculty, the practical aspect of legal training is considered as important as the theoretical aspect. Hence the law clinic and moot court. The Law Clinic provides hands-on legal experience to law students while also providing pro bono legal services to those who cannot afford legal representation. The moot court provides students with an avenue for healthy competition amongst their peers, which involves reality-stimulated cases to advance their training in advocacy.

For more:

www.nileuniversity.edu.ng/faculties

College of Health Sciences



The vision of the College of Health Sciences is to generate knowledge, technology, and healthcare education at a global level. In recognition of the need to provide the best medical intervention in Nigeria, the management of Nile University of Nigeria has worked assiduously to set up the College of Health Sciences with a focus on providing the best medical school that will train pioneers who will come up with groundbreaking innovations in the medical field.

The faculty's approach to teaching, learning, and assessment is focused on the practical application of skills and knowledge. Our modern approach to learning includes smart boards and the use of mobile technologies. With access to comprehensive world-class laboratories, which include the clinical skills lab, physiology lab, pathology lab, bio-chemistry lab, microbiology lab, pharmacology lab, anatomy lab, and anatomy museum, students get to combine theoretical learning with extensive practicals and simulations.

In line with national and international accreditation criteria, students in their first and second years are taught basic first aid and clinical skills. Alongside the use of high-profile partner hospitals such as Nizamiye Hospital and Asokoro District Hospital as teaching hospitals, the college ensures well-rounded exposure and quality medical education for students.

For more:

www.nileuniversity.edu.ng/faculties

Faculty of Science



The Faculty of Science offers a high-quality curriculum in the areas of pure and applied science. All programs in this faculty have a common first-year module, giving students a strong and informed basis for choosing subsequent modules.

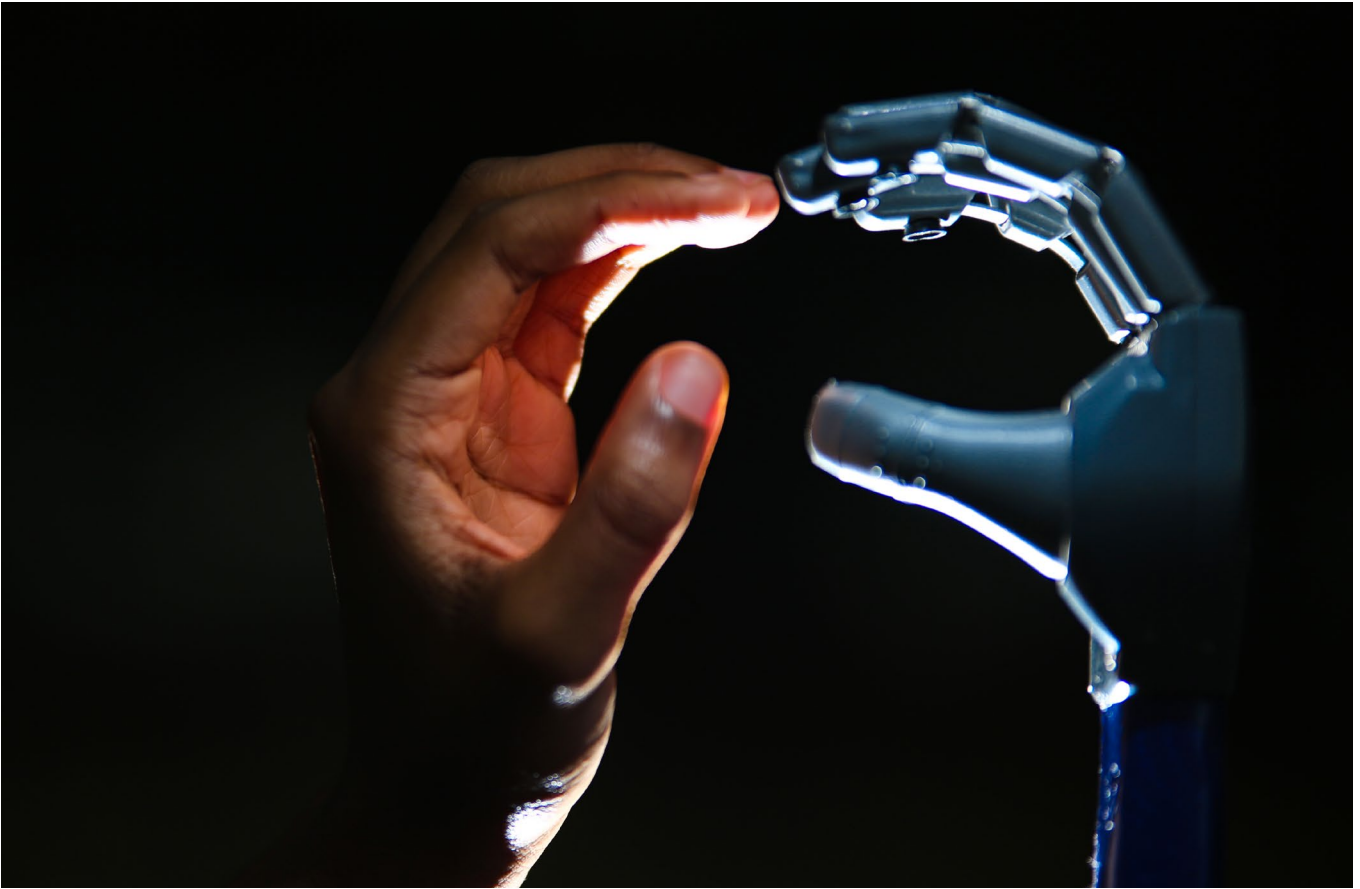
Our teaching, learning, and assessment methods are aimed at giving students the opportunity to enhance existing skills and develop new ones. Our students have access to training in modern scientific laboratories, which equips them with skills of global standards that they can use in real-life situations and at every level of their educational journey. To achieve this vision, the faculty encourages academic staff to update their knowledge through postgraduate training, research, and workshops.



For more:

www.nileuniversity.edu.ng/faculties

Faculty of Computing Studies



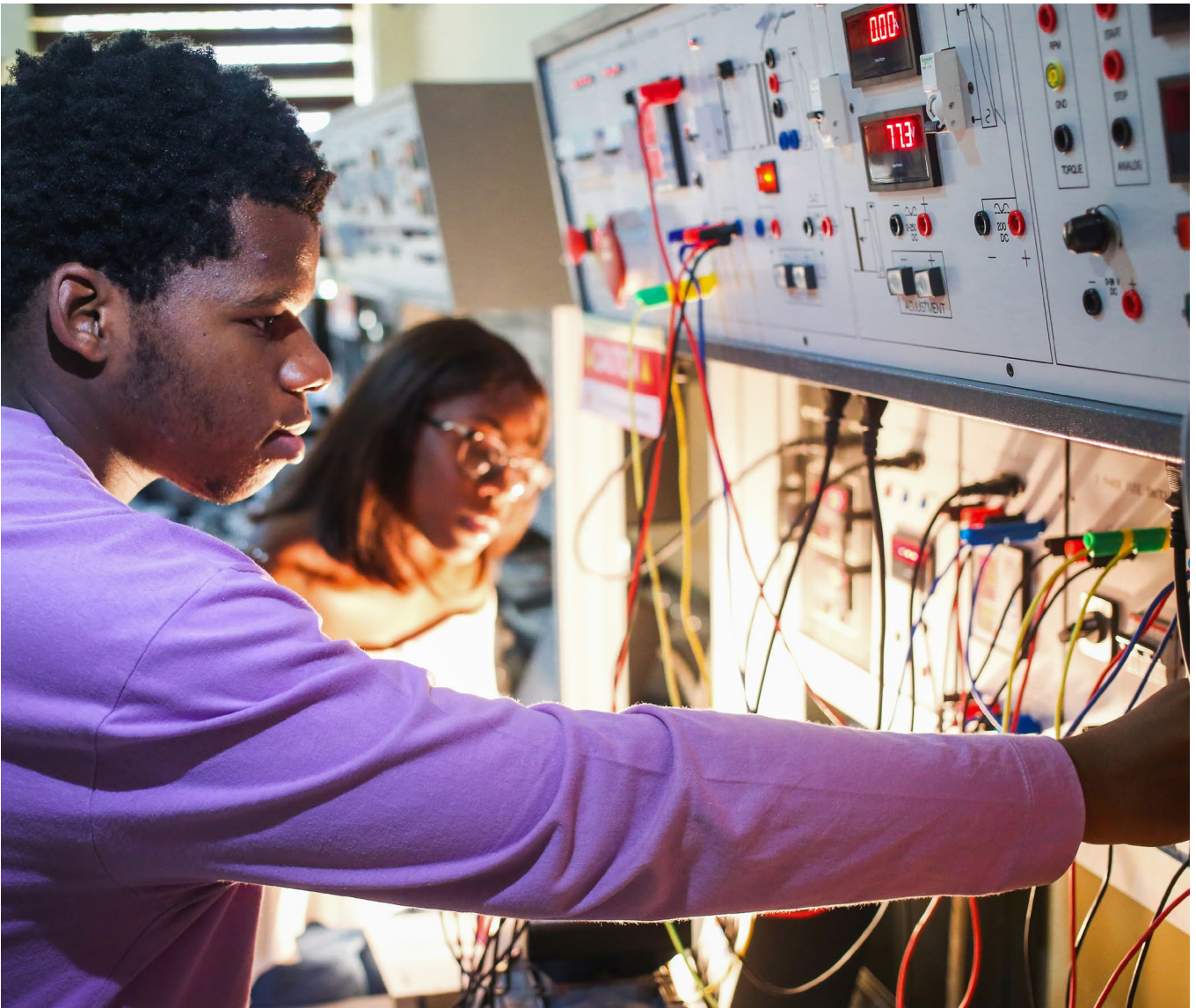
The Faculty of Computing Studies at Nile University is dedicated to shaping the next generation of digital innovators and problem solvers through academic excellence, cutting-edge research, and industry-relevant programmes. The faculty offers a diverse range of programmes designed to meet the evolving needs of the 21st-century technology-driven world. The curriculum is carefully crafted to provide a solid foundation in computer science principles while incorporating the latest advancements in emerging fields such as artificial intelligence, big data analytics, and cybersecurity. Through a combination of rigorous coursework, practical projects, and industry collaborations, the faculty equips students with the skills and expertise that are in high demand in today's job market.

Among the key strengths of the faculty is the exceptional lecturers who are accomplished researchers and experienced professionals. They bring a wealth of knowledge and real-world insights into the classroom, inspiring and guiding students to explore new frontiers in technology. The faculty's state-of-the-art laboratories and research centers provide students with the opportunity to engage in groundbreaking research projects, pushing the boundaries of innovation and discovery. The faculty fosters an inclusive and supportive environment that encourages diversity of thought and celebrates individuality, thereby ensuring that its students are part of a vibrant and dynamic community, where creativity and collaboration thrive.

For more:

www.nileuniversity.edu.ng/faculties

Faculty of Engineering



The faculty offers a qualitative educational experience to equip students with adequate skills and knowledge that will enable them to propose innovative ideas and solutions in the ever-evolving world of technology and engineering. Our students experience balanced learning cut across theory, practical lab work, and competitive course work by which their minds are creatively engaged to encourage research and innovative practices in line with world standard understanding and approach. Staff and students are also involved in various extracurricular activities, including regular seminars and presentations, real-world solution projects, and research projects funded by the government and industry.

We make work experience part of the curriculum and support students in gaining relevant placement opportunities. We also provide advice and mentorship in order to help students tailor their careers and begin their integration into the workforce. The faculty encourages students and staff to develop synergy across disciplines to facilitate the development of well-rounded, educated, productive, and ethical individuals well versed in technology, social, and environmental issues.

For more:

www.nileuniversity.edu.ng/faculties

Faculty of Environmental Sciences



The Faculty of Environmental Sciences is dedicated to shaping the next generation of environmental leaders by providing exceptional education, cutting-edge research, and innovative solutions to address the pressing environmental challenges of today and tomorrow.

The faculty boasts lecturers who are renowned experts in their respective fields, covering a wide range of disciplines such as Architecture, Quantity Surveying, Urban & Regional Planning, to name a few. They bring a wealth of knowledge and real-world experience to the classroom, ensuring that our students receive a comprehensive and up-to-date education. The faculty offers students the opportunity to engage in hands-on fieldwork, laboratory experiments, amongst others to gain practical skills and insights. Additionally, the Faculty foster collaboration and partnerships with industry, government agencies, to name a few to provide students with real-world exposure and opportunities for internships and research projects.

For more:

www.nileuniversity.edu.ng/faculties

Faculty of Arts & Social Sciences



The Faculty of Arts and Social Sciences offers a vibrant and innovative educational experience for students interested in its programs, including Economics, Political Science & International Relations, Mass Communication, Peace Studies & Conflict Resolution, to name a few.

The Faculty's approach to teaching reflects universal academic culture, discipline, and quality in the provision of education in order to foster academic excellence, moral leadership, professional responsibility, and social awareness to produce articulate, sharp, and confident graduates endowed with the potential to overcome the vast challenges in the dynamic and ever changing face of business around the globe. We distinguish ourselves by taking an active interdisciplinary approach to problem solving, expanding our global initiatives, and promoting scholarly engagement in current and emerging social issues.

For more:

www.nileuniversity.edu.ng/faculties

Faculty of Management Sciences



The Faculty of Management Sciences is committed to delivering the highest quality arts, humanities, and social science education for the 21st century and performing a cardinal role in the fulfillment of the mission of Nile University of Nigeria, Abuja.

The Faculty offers graduate and undergraduate programs of research, scholarship, and artistic expression that provide students with a positive and rewarding learning experience that promotes a broad understanding of languages and ways of learning. We aim to encourage students to develop strong critical thinking, analytical reasoning, problem solving, communication skills, and creative talents that will foster their development as knowledgeable, engaged, moral, and confident global citizens and leaders.

For more:

www.nileuniversity.edu.ng/faculties

SCHOOL OF PRELIMINARY STUDIES

This programme is an intensive full-time course designed for students seeking admission through direct entry into any university. During the 12-month programme, students are exposed to a wide range of skills and knowledge of subjects related to the programme they wish to study in the university.

The programme content contains a blend of Nigerian and Foreign A 'Level courses, enabling students who have met the requirements to gain direct entry admission to 200 Level at Nile University or any other tertiary institution of their choice within Nigeria and overseas (particularly the UK).

Who can apply?

- Those who possess a **minimum of five (5) credits** in English, Mathematics, and three (3) other relevant subjects in **WAEC/NECO/NABTEB/IGCSE** or their equivalent at a maximum of two (2) sittings.
- Those who do not have **JAMB** but wish to gain admission to the university through direct entry

Programme Structure

In addition to some compulsory courses which they would be exposed to, students are required to choose three subjects relevant to their intended degree programme.

S/N	FACULTY	COURSE NAME	SUBJECT COMBINATIONS
1	Arts & Social Sciences	Criminology and Security Studies	Economics, Government or History, Literature In English
		Economics	Economics, Government or History, Literature In English
		Mass Communication	Government or History, Literature In English, Economics
		Psychology	Economics, Government or History, Biology
2	Management Sciences	Accounting	Accounting, Business Studies, Economics
		Business Administration	Mathematics, Economics, Business Management
		Public Administration	Mathematics, Economics, Government or History
			Business Management, Economics, Government or History
			Accounting, Economics, Government or History

S/N	FACULTY	COURSE NAME	SUBJECT COMBINATIONS
3	Law	Public and International Law	Government or History, Literature In English, CRS or IRS Economics, Government or History, Literature In English CRS or IRS, Government or History, Literature In English
4	College of Health Sciences	Medicine Human Anatomy Human Physiology Public Health	Biology, Chemistry, Physics
5	Natural & Applied Sciences	Biochemistry Biology Biotechnology Computer Science Cyber Security Information Technology Microbiology Software Engineering	Mathematics, Physics, Biology Mathematics, Physics, Chemistry Biology, Physics, Chemistry
6	Engineering	Computer Engineering Electrical & Electronics Engineering Civil Engineering Petroleum & Gas Engineering Chemical Engineering Mechanical Engineering Mechatronics Architecture	Mathematics, Physics, Chemistry

SCHOOL OF PRELIMINARY STUDIES TUITION FEES

For 2022/2023 ACADEMIC SESSION

SCIENCES	
	N2,750,000
NON-SCIENCES	
	N2,500,000



UNDERGRADUATE TUITION FEES

for 2023/2024 ACADEMIC SESSION

COURSE	DURATION	FEE PER SEMESTER	FEE PER SESSION
--------	----------	------------------	-----------------

COLLEGE OF HEALTH SCIENCES

Medicine & Surgery	12 semesters/ 6 years	N2,975,000	N5,950,000
Human Anatomy	8 semesters/ 4 years	N1,375,000	N2,750,000
Human Physiology	8 semesters/ 4 years	N1,375,000	N2,750,000
Public Health	8 semesters/ 4 years	N1,375,000	N2,750,000

FACULTY OF ARTS & SOCIAL SCIENCES

Economics	8 semesters/ 4 years	N1,300,000	N2,600,000
Political Science & International Relations	8 semesters/ 4 years	N1,300,000	N2,600,000
Sociology	8 semesters/ 4 years	N1,300,000	N2,600,000
English Studies	8 semesters/ 4 years	N,300,000	N2,600,000
Criminology & Security Studies	8 semesters/ 4 years	N1,300,000	N2,600,000
Psychology	8 semesters/ 4 years	N1,300,000	N2,600,000
Mass Communication	8 semesters/ 4 years	N1,300,000	N2,600,000
Peace Studies & Conflict Resolution	8 semesters/ 4 years	N1,300,000	N2,600,000

FACULTY OF MANAGEMENT SCIENCES

Accounting	8 semesters/ 4 years	N1,300,000	N2,600,000
Banking and Finance	8 semesters/ 4 years	N1,300,000	N2,600,000
Business Administration	8 semesters/ 4 years	N1,300,000	N2,600,000
Public Administration	8 semesters/ 4 years	N1,300,000	N2,600,000
Marketing	8 semesters/ 4 years	N1,300,000	N2,600,000
Entrepreneurship	8 semesters/ 4 years	N1,300,000	N2,600,000

FACULTY OF ENGINEERING

Computer Engineering	10 semesters/ 5 years	N1,350,000	N2,700,000
Electrical and Electronics Engineering	10 semesters/ 5 years	N1,350,000	N2,700,000
Civil Engineering	10 semesters/ 5 years	N1,350,000	N2,700,000
Petroleum & Gas Engineering	10 semesters/ 5 years	N1,350,000	N2,700,000
Chemical Engineering	10 semesters/ 5 years	N1,350,000	N2,700,000
Mechanical Engineering	10 semesters/ 5 years	N1,350,000	N2,700,000
Mechatronics Engineering	10 semesters/ 5 years	N1,350,000	N2,700,000
Information & Communication Engineering	10 semesters/ 5 years	N1,350,000	N2,700,000

FACULTY OF ENVIRONMENTAL SCIENCES			
Architecture	10 semesters/ 5 years	N1,350,000	N2,700,000
Urban & Regional Planning	10 semesters/ 5 years	N1,350,000	N2,700,000
Estate Management	10 semesters/ 5 years	N1,350,000	N2,700,000
Building	10 semesters/ 5 years	N1,350,000	N2,700,000
Quantity Surveying	10 semesters/ 5 years	N1,350,000	N2,700,000

FACULTY OF SCIENCE			
Biology	8 semesters/ 4 years	N1,300,000	N2,600,000
Biotechnology	8 semesters/ 4 years	N1,300,000	N2,600,000
Biochemistry	8 semesters/ 4 years	N1,300,000	N2,600,000
Microbiology	8 semesters/ 4 years	N1,300,000	N2,600,000
Industrial Chemistry	8 semesters/ 4 years	N1,300,000	N2,600,000
Mathematics	8 semesters/ 4 years	N1,300,000	N2,600,000
Physics	8 semesters/ 4 years	N1,300,000	N2,600,000
Science Laboratory Technology (options in Biotechnology and Microbiology)	10 semesters/ 5 years	N1,300,000	N2,600,000

FACULTY OF COMPUTING STUDIES			
Computer Science	8 semesters/ 4 years	N1,350,000	N2,700,000
Software Engineering	8 semesters/ 4 years	N1,350,000	N2,700,000
Cyber Security	8 semesters/ 4 years	N1,350,000	N2,700,000
Information Technology	8 semesters/ 4 years	N1,350,000	N2,700,000
Data Science	8 semesters/ 4 years	N1,350,000	N2,700,000
Information System	8 semesters/ 4 years	N1,350,000	N2,700,000

FACULTY OF LAW			
Law	10 semesters/ 5 years	N1,500,000	N3,000,000

- Note:** 1. Tuition for returning students is the same as stipulated in their admission letters
2. Fees only cover tuition; accommodation is not included.



SCHOOL OF POSTGRADUATE STUDIES

ABOUT

SCHOOL OF POSTGRADUATE STUDIES

Postgraduate Studies at Nile University provide advanced educational opportunities to both developing scholars and working professionals. Specifically, postgraduate students are provided with both theoretical and research-oriented knowledge for effective functioning in relevant fields. Postgraduate school also provides in-depth knowledge for those who would like to take up careers in research-related fields, a base for independent intellectual work, and a problem-solving approach.

HOW TO APPLY

Visit Nile University's website at www.nileuniversity.edu.ng to apply online.

Required Documents

1. Completed or signed Application form
2. Copy of Bachelor's degree transcript
3. Copy of official Bachelor's certificate
4. Certificate of birth
5. Copies of O'levels
6. Copy of Masters Certificate and transcripts (PhD student only)

POSTGRADUATE PROGRAMMES

COLLEGE OF HEALTH SCIENCES

MPH Public Health

FACULTY OF ARTS & SOCIAL SCIENCES

PGD Economics

M.Sc. Economics

MPhil Economics

PhD Economics

PGD Mass Communication

M.Sc. Mass Communication

PGD International Relations & Diplomacy

M.Sc. International Relations & Diplomacy

MPhil International Relations & Diplomacy

PhD International Relations & Diplomacy

MIR International Relations

PGD Political Science

M.Sc. Political Science

MPhil Political Science

PhD Political Science

M.Sc. Financial Economics

MFE Financial Economics

PGD Peace, Conflict and Strategic Studies

M.Sc. Peace, Conflict and Strategic Studies

MPhil Peace, Conflict and Strategic Studies

PhD Peace, Conflict and Strategic Studies

FACULTY OF ENGINEERING

PGD Computer Engineering

M.Eng. Computer Engineering

PGD Electrical and Electronics Engineering

M.Eng. Electrical and Electronics Engineering

PhD Electrical and Electronics Engineering

PGD Civil Engineering

M.Eng. Civil Engineering

PGD Petroleum & Gas Engineering

M.Eng. Petroleum & Gas Engineering

FACULTY OF MANAGEMENT SCIENCES

PGD Accounting

M.Sc. Accounting

PhD Accounting

PGD Management

M.Sc. Management

MPhil Management

PhD Management

M.Sc. Auditing/Forensic Management

MBA Master of Business Administration

MAF Accounting and Finance

FACULTY OF SCIENCE

PGD Biology

M.Sc. Biology

M.Sc. Industrial Chemistry (Petroleum Chemistry)

PhD Industrial Chemistry

M.Sc. Analytical Chemistry

M.Sc. Polymer Chemistry

FACULTY OF COMPUTING STUDIES

PGD Computer Science

M.Sc. Computer Science

PhD Computer Science

FACULTY OF LAW

PGD Law

LLM Law

PhD Law

POSTGRADUATE TUITION FEES

for 2023/2024 ACADEMIC SESSION

COURSE	DURATION	TUITION/SEMESTER	TUITION/SESSION	TOTAL PROGRAM FEE
--------	----------	------------------	-----------------	-------------------

COLLEGE OF HEALTH SCIENCES

MPH Public Health	3 semesters/ 1.5 years	N1,100,000	N2,200,000	N3,300,000
-------------------	------------------------	------------	------------	------------

FACULTY OF ARTS & SOCIAL SCIENCES

PGD Economics	2 semesters/ 1 year	N600,000	N1,200,000	N1,200,000
M.Sc. Economics	4 semesters/ 2 years	N700,000	N1,400,000	N2,800,000
MPhil Economics	2 semesters/ 1 year	N600,000	N1,200,000	N1,200,000
PhD Economics	6 semesters/ 3 years	N750,000	N1,500,000	N4,500,000
PGD Mass Communication	2 semesters/ 1 year	N600,000	N1,200,000	N1,200,000
M.Sc. Mass Communication	4 semesters/ 2 years	N700,000	N1,400,000	N2,800,000
PGD International Relations & Diplomacy	2 semesters/ 1 year	N600,000	N1,200,000	N1,200,000
M.Sc. International Relations & Diplomacy	4 semesters/ 2 years	N700,000	N1,400,000	N2,800,000
MPhil International Relations & Diplomacy	2 semesters/ 1 year	N600,000	N1,200,000	N1,200,000
PhD International Relations & Diplomacy	6 semesters/ 3 years	N750,000	N1,500,000	N4,500,000
MIR International Relations	4 semesters/ 2 years	N800,000	N1,600,000	N3,200,000
PGD Political Science	2 semesters/ 1 year	N600,000	N1,200,000	N1,200,000
M.Sc. Political Science	4 semesters/ 2 years	N700,000	N1,400,000	N2,800,000
MPhil Political Science	2 semesters/ 1 year	N600,000	N1,200,000	N1,200,000
PhD Political Science	6 semesters/ 3 years	N750,000	N1,500,000	N4,500,000
M.Sc. Financial Economics	4 semesters/ 2 years	N700,000	N1,400,000	N2,800,000
MFE Financial Economics	2 semesters/ 1 year	N800,000	N1,600,000	N1,600,000
PGD Peace, Conflict and Strategic Studies	2 semesters/ 1 year	N600,000	N1,200,000	N1,200,000

M.Sc. Peace, Conflict and Strategic Studies	4 semesters/ 2 years	N700,000	N1,400,000	N2,800,000
MPhil Peace, Conflict and Strategic Studies	2 semesters/ 1 year	N600,000	N1,200,000	N1,200,000
PhD Peace, Conflict and Strategic Studies	6 semesters/ 3 years	N750,000	N1,500,000	N4,500,000

FACULTY OF ENGINEERING				
PGD Computer Engineering	3 semesters/ 1.5years	N600,000	N1,200,000	N1,800,000
M.Eng. Computer Engineering	3 semesters/ 1.5 years	N750,000	N1,500,000	N2,250,000
PhD Computer Engineering	6 semesters/ 3 years	N750,000	N1,500,000	N4,500,000
PGD Electrical and Electronics Engineering	3 semesters/ 1.5years	N600,000	N1,200,000	N1,800,000
M.Eng. Electrical and Electronics Engineering	3 semesters/ 1.5years	N750,000	N1,500,000	N2,250,000
PhD Electrical and Electronics Engineering	6 semesters/ 3 years	N750,000	N1,500,000	N2,250,000
PGD Civil Engineering	3 semesters/ 1.5years	N600,000	N1,200,000	N1,800,000
M.Eng. Civil Engineering	3 semesters/ 1.5years	N750,000	N1,500,000	N2,250,000
PhD Civil Engineering	6 semesters/ 3 years	N750,000	N1,500,000	N4,500,000
PGD Petroleum & Gas Engineering	3 semesters/ 1.5years	N600,000	N1,200,000	N1,800,000
M.Eng. Petroleum & Gas Engineering	3 semesters/ 1.5years	N750,000	N1,500,000	N2,250,000
M.Sc. Oil and Gas Engineering	3 semesters/ 1.5 years	N750,000	N1,500,000	N2,250,000
PhD Petroleum and Gas Engineering	6 semesters/ 3 years	N750,000	N1,500,000	N4,500,000

FACULTY OF MANAGEMENT SCIENCES				
PGD Accounting	2 semesters/ 1 year	N600,000	N1,200,000	N1,200,000
M.Sc. Accounting	4 semesters/ 2 years	N700,000	N1,400,000	N2,800,000
PhD Accounting	6 semesters/ 3 years	N750,000	N1,500,000	N4,500,000
PGD Management	2 semesters/ 1 year	N600,000	N1,200,000	N1,200,000
M.Sc. Management	4 semesters/ 2 years	N700,000	N1,400,000	N2,800,000
MPhil Management	2 semesters/ 1 year	N600,000	N1,200,000	N1,200,000
PhD Management	6 semesters/ 3 years	N750,000	N1,500,000	N4,500,000

M.Sc. Auditing/ Forensic Management	4 semesters/ 2 years	N700,000	N1,400,000	N2,800,000
MBA Master of Business Administration	4 semesters/ 2 years	N800,000	N1,600,000	N3,200,000
MAF Accounting and Finance	4 semesters/ 2 years	N800,000	N1,600,000	N3,200,000
Executive Master of Business Administration	3 semesters/ 1.5 years	?	?	?

FACULTY OF SCIENCE

PGD Biology	2 semesters/ 1 year	N600,000	N1,200,000	N1,200,000
M.Sc. Biology	3 semesters/ 1.5 years	N750,000	N1,500,000	N2,250,000
M.Sc. Industrial Chemistry (Petroleum Chemistry)	3 semesters/ 1.5 years	N750,000	N1,500,000	N2,250,000
PhD Industrial Chemistry	6 semesters/ 3 years	N750,000	N1,500,000	N4,500,000
M.Sc. Analytical Chemistry	3 semesters/ 1.5 years	N750,000	N1,500,000	N2,250,000
M.Sc. Polymer Chemistry	3 semesters/ 1.5 years	N750,000	N1,500,000	N2,250,000

FACULTY OF COMPUTING STUDIES

PGD Computer Science	2 semesters/ 1 year	N600,000	N1,200,000	N1,200,000
M.Sc. Computer Science	3 semesters/ 1.5 years	N750,000	N1,500,000	N2,250,000
PhD Computer Science	6 semesters/ 3 years	N750,000	N1,500,000	N4,500,000
PGD Software Engineering	2 semesters/ 1 year	N600,000	N1,200,000	N1,200,000
M.Sc. Software Engineering	3 semesters/ 1.5 years	N750,000	N1,500,000	N2,250,000
PGD Information Technology	2 semesters/ 1 year	N600,000	N1,200,000	N1,200,000
M.Sc. Information Technology	3 semesters/ 1.5 years	N750,000	N1,500,000	N2,250,000

FACULTY OF LAW

PGD Law	2 semesters/ 1 year	N600,000	N1,200,000	N1,200,000
LLM Law	2 semesters/ 1 year	N750,000	N1,500,000	N1,500,000
PhD Law	6 semesters/ 3 years	N750,000	N1,500,000	N4,500,000

Note: Tuition for returning students is the same as stipulated in their admission letters

SCHOLARSHIP TERMS AND CONDITIONS

1. ACADEMIC SCHOLARSHIPS

UNDERGRADUATE PROGRAMS

Applicants to undergraduate programs may receive scholarships subject to their JAMB or O-LEVEL (WAEC/NECO) results as announced by the Board of Trustees of Nile University of Nigeria ("NILE"). For the 2023/2024 academic session, scholarships would be offered based on the following criteria:

	JAMB				WAEC/NECO		
	240	260	280	300	5A1	6A1	7A1
<ul style="list-style-type: none"> All Undergraduate Programs EXCEPT Law & Medicine 320 above + 5 A1 will be offered a 100% scholarship 	10%	20%	30%	40%	10%	20%	30%

A-LEVEL RESULTS	NILE SPS	OTHERS
3 A's	25%	20%
2 A's	15%	10%

POSTGRADUATE PROGRAMS

- First-class graduates of NILE (undergraduate programs) will be **eligible for a 50%** scholarship towards their Master's (or PGD) program.
- NILE graduates (undergraduate programs) with degrees other than first class will be **eligible for a 20%** scholarship towards their Master's (or PGD) program.
- Postgraduate alumni of NILE (applicants who hold a postgraduate degree from NILE) returning for another postgraduate degree at NILE are eligible for a 20% scholarship.

SPORTS

Applicants with outstanding performance in sports at the national or professional level are eligible for a **100% scholarship for undergraduate studies**, subject to the approval of the NILE Board of Trustees if they represent NILE in their respective sports.

Guidelines on Scholarships:

- Undergraduate applicants will only be allowed to use either JAMB or O-LEVEL results for the above-referenced scholarships. O-LEVEL results shall be either WAEC or NECO.
- Applicants for undergraduate programs with both JAMB scores of 320 and above + 5 A's and above in O-LEVEL would be eligible for a 100% scholarship.
- Recipients of undergraduate scholarships must maintain a minimum average CGPA of 3.50 to keep their scholarships in each new session.
- Recipients of scholarships must not be involved in any act of misconduct or contravene NILE's regulations.
- Scholarships are limited to quotas as decided by the Management of NILE and will be accessible on a first-come-first-served basis.
- NILE reserves the right to withdraw the scholarship offered should the need arise.

2. DISCOUNTS

- a. Parents will get the following **SIBLING** discount if they have more than one child in NILE.

Two children	-	5%
Three children	-	10%
Four children	-	15%
Five children and above	-	20%

Note:

- The sibling discount is not automatic and **MUST** be applied for by either biological parent.
 - Siblings must share a common biological parent.
 - The discount will apply to each **NEW** sibling in the **CURRENT SEMESTER** and be valid for the outstanding normal duration of studies upon successful application and approval.
- b. Institutions or bodies sponsoring applicants to NILE's Postgraduate programs will receive the following **INSTITUTION** discounts for students enrolling within the current academic session:
- | | | |
|--------------|---|-----|
| 5 - 10 | = | 10% |
| 10 - 20 | = | 15% |
| 20 and above | = | 20% |
- c. Discounts are **limited to quotas as** decided by the Management of NILE and will be accessible on a **first-come-first-served basis**.

APPLICANTS CANNOT BE CONSIDERED FOR DISCOUNTS OR SCHOLARSHIPS UNDER MORE THAN ONE CRITERION. WHERE APPLICANTS ARE ELIGIBLE UNDER MULTIPLE CONDITIONS, APPLICANTS MUST APPLY UNDER THE OPTION THAT OFFERS THE HIGHEST DISCOUNT OR SCHOLARSHIP. THERE SHALL BE NO SUBSTITUTES THEREAFTER.

IN ADDITION TO MEETING THE ELIGIBILITY CRITERIA, APPLICANTS MUST APPLY FOR DISCOUNTS OR SCHOLARSHIPS TO BE CONSIDERED. APPLICATIONS FOR DISCOUNTS AND SCHOLARSHIPS ARE VALID ONLY AT THE POINT OF ENTRY—DISCOUNTS AND SCHOLARSHIPS ARE NOT APPLIED RETROSPECTIVELY.

DISCOUNTS AND SCHOLARSHIPS DO NOT APPLY TO HOSTEL FEES

ACADEMIC EXCELLENCE



STUDENT EXPERIENCE





ADDRESS

Plot 681, Cadastral Zone C-OO, Research & Institution Area, Jabi Airport Bypass,
Abuja FCT, (00001 NIGERIA

CALL US:

09030001211, 09169853403, 08035197928, 09085997964, 09169853401, 08066027981.

MAIL US:

admission@nileuniversity.edu.ng, info@nileuniversity.edu.ng

FOLLOW US ON SOCIAL MEDIA



NileUniversityOfNigeria



NileUniversityOfNigeria



@nileuni



@nileuni